

CUSTOMIZE YOUR OWN

FOOTBALL



SPORTSWEAR SINCE 1900

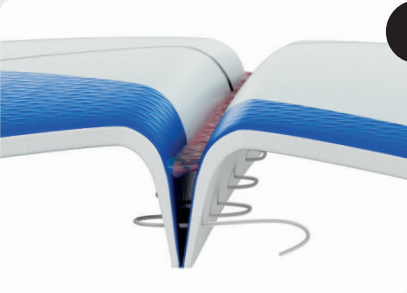
SMU FOOTBALLS

GET TOGETHER AND WIN

GLUED & STITCHED

- the best of both worlds! Our ERIMA hybrid technology combines the outstanding playing characteristics of a glued match ball with the high durability of a stitched ball.

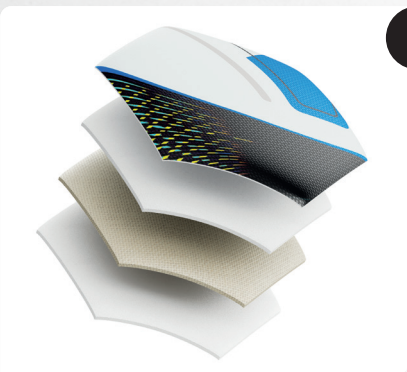
>> **PERFECT FOR EVERY SITUATION** <<
No matter what the weather or surface - soft and robust even in cold temperatures.



1
EXTREMELY DURABLE AND ROBUST
The panels are deep-sewn and additionally thermally glued - this results in extremely stable seams that absorb only a minimum of water and dirt.



2
MAXIMUM DURABILITY
The specially wrapped bladder ensures perfect roundness and takes the strain off the seams and the material.



3
EXCELLENT BALL FEEL AND OPTIMUM POWER TRANSMISSION
This is thanks to the special combination of several layers of particularly soft, durable high-tech high-tech foam.



4
PRECISE FLIGHT BEHAVIOR AND BETTER BALL CONTROL
The 3D-structured PU upper material improves grip and aerodynamics.



ORDERING CONDITIONS

- Minimum order quantity: 300 pieces
- All logos must be submitted vectorized (one vector graphic, in .ai or .eps file format).
- Own design and colors possible.
- The first correction is free of charge. Any further corrections will be charged at cost.
- The delivery time is 3 - 6 months after approval.
- For your SMU request, please contact our team via e-mail at export@erima.de or at www.erima.eu/corporate/smu to create your individual design.

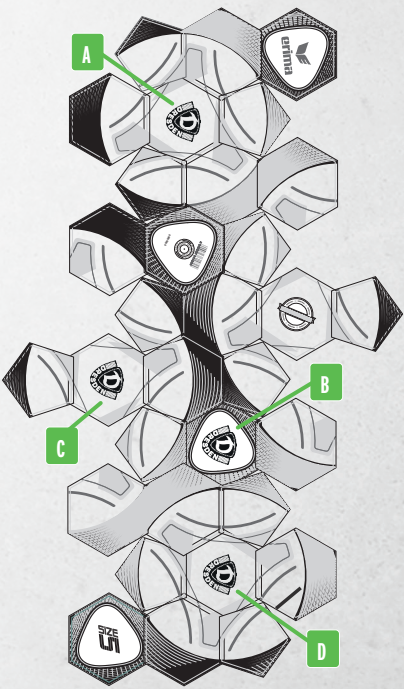


ERIMA Hybrid Training - the original

- ABS valve/carbon latex bladder with 8 wings
- Exceptional training ball with the characteristics of a match ball
- Extremely durable PU with 3D structure
- Minimal water absorption in the rain
- Very suitable For artificial turf pitches
- Sizes 5, 4, 3

RRP 39,99*

LOGO POSITIONS



ORDERING CONDITIONS

- Minimum order quantity: 300 pieces
- All logos must be submitted vectorized (one vector graphic, in .ai or .eps file format).
- Own design and colors possible.
- The first correction is free of charge. Any further corrections will be charged at cost.
- The delivery time is 3 - 6 months after approval.
- For your SMU request, please contact our team via e-mail at export@erima.de or at www.erima.eu/corporate/smu to create your individual design.



ERIMA Hybrid Training 2.0

- Exceptional training ball with the characteristics of a match ball
- Extremely durable PU with 3D structure
- Robust, soft upper material for improved ball feel and durability
- ERIMA hybrid technology
- Minimal water absorption in the rain
- Perfect in any weather and on any surface
- Size 5, 4, 3

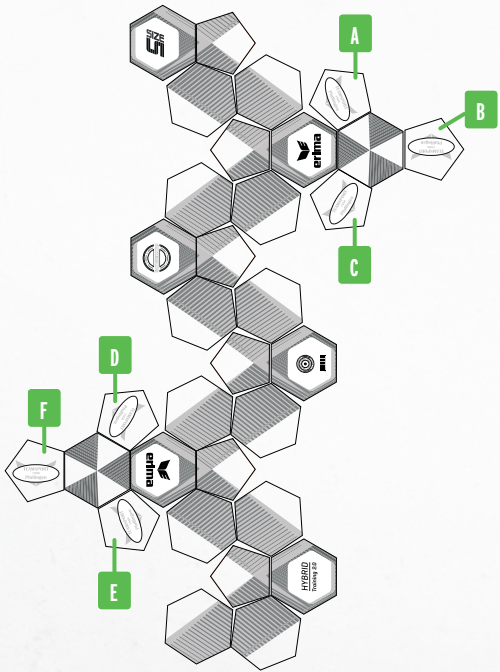
RRP 42,99*

ERIMA Hybrid Lite 350 g | 290 g

- Extremely durable PU with 3D structure
- Robust, soft upper material for improved feel and durability
- ERIMA hybrid technology
- Minimal water absorption in the rain
- Perfect in any weather and on any surface
- 350 g: Size 5, 4
- 290 g: Size 5, 4, 3

RRP 29,99*

LOGO POSITIONS



ORDERING CONDITIONS

- Minimum order quantity: 300 pieces
- All logos must be submitted vectorized (one vector graphic, in .ai or .eps file format).
- Own design and colors possible.
- The first correction is free of charge. Any further corrections will be charged at cost.
- The delivery time is 3 - 6 months after approval.
- For your SMU request, please contact our team via e-mail at export@erima.de or at www.erima.eu/corporate/smu to create your individual design.



SENZOR-STAR TRAINING

- Durable PU material with 3D structure for perfect flight characteristics
- ABS valve/latex bladder
- Latest RESIST-Digital technology For long-lasting grip and Perfect roundness
- Internal seams reduce water absorption
- Water-based printing inks
- Sizes 5, 4, 3

RRP 24,99*

LOGO POSITIONS



ORDERING CONDITIONS

- Minimum order quantity: 300 pieces
- All logos must be submitted vectorized (one vector graphic, in .ai or .eps file format).
- Own design and colors possible.
- The first correction is free of charge. Any further corrections will be charged at cost.
- The delivery time is 3 - 6 months after approval.
- For your SMU request, please contact our team via e-mail at export@erima.de or at www.erima.eu/corporate/smu to create your individual design.



ORDERING CONDITIONS

- Minimum order quantity: 300 pieces
- All logos must be submitted vectorized (one vector graphic, in .ai or .eps file format).
- Own design and colors possible.
- The first correction is free of charge. Any further corrections will be charged at cost.
- The delivery time is 3 - 6 months after approval.
- For your SMU request, please contact our team via e-mail at export@erima.de or at www.erima.eu/corporate/smu to create your individual design.



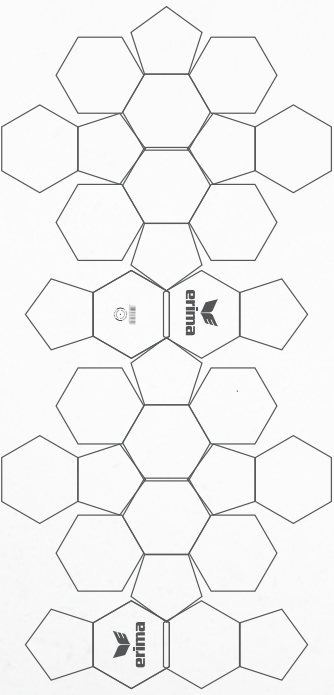
Superior

- High-quality merchandising ball, perfect for training
- Very soft feel thanks to TPU upper material
- Complete design freedom
- Particularly Robust and round thanks to machine-stitched panels
- Sizes 5, 4, 3

RRP 19,95*

LOGOPOSITIONEN

Design, logo position and color can be chosen freely.



Raw

- Merchandising perfect for large-scale logo placement
- 2.5 mm semi-PU upper material
- Complete design freedom
- Particularly Robust and round thanks to machine-stitched panels
- 26 or 32 panel construction possible
- Size 5

RRP 16,95*

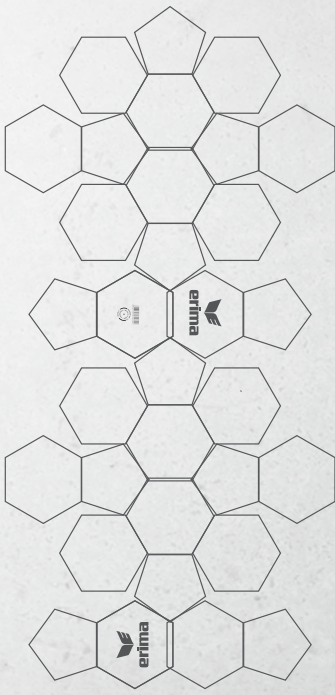
Raw Mini

- Merchandising ball, perfect for large-scale logo placement
- Complete design freedom
- Particularly Robust and round thanks to machine-stitched panels
- 26 or 32 panel construction possible
- Size 00

RRP 12,95*

LOGO POSITIONS

Design, logo position and color can be chosen freely.





Connect
with us



www.erima.de
SMU FUSSBALL 2024 | D 9392411